

# WINGS



CUSTOMIZED INTERIOR FURNISHINGS - TAYLOR MADE DESIGN  
PROJECT AND REALISATION



DIRECT CONTACT: +39-3200362698

Via Leone XIII, 4 - 25037 Pontoglio (BS) IT - EMAIL: [info@wingsworlds.com](mailto:info@wingsworlds.com) - WEBSITE: [www.inter-nos.info](http://www.inter-nos.info)

# WINGS



## PHILOSOPHY

**INTER-NOS** by **WINGS** responds to the very personal philosophy behind our projects. **WINGS** believes that space should be understood and perceived as a unit and not just as the sum of containers and supports. **WINGS** gives great importance to the spatial order in such a way that furniture, accessories and architectural structures compose a unicum with clear and unequivocal reference points.

**WINGS** is a lean and modern company that summarizes in itself the characteristics of an architectural firm and a manufacturer.

**INTER-NOS**, playing on a double meaning, summarizes "the Architect and the Carpenter" by merging the technological potential of modern furniture production, craftsmanship and CAD design complete with cutting-edge photographic rendering.

## CREATIVITY

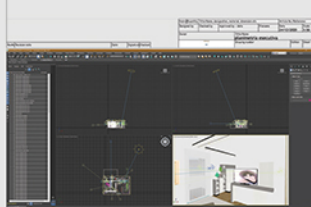
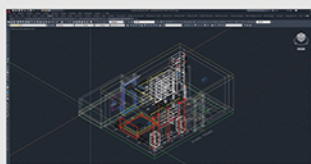
**WINGS**, thanks to a great experience in the sector of custom-made interior furnishings, it designs and manufactures home furniture for dwellings of any size or type. **WINGS** analyzes the project both from an architectural and a functional point of view, but above all, in a creative and organization key to the spaces.

**WINGS** with a skilful and calibrated design, with the use of furnishing elements, correct lighting, furniture and accessories, provides the means by which customers achieve their residential quality objective. **INTER-NOS** by **WINGS** achieves this result through interaction with the customer who becomes an actor co-protagonist of the creation itself, inspiring its needs and objectives. We therefore invite you to share with us your expectations for the realization of a creative and effective project.

### Lino Busetti:

*"WINGS it is above all creativity, a door open to all cultures, a very real individual space, the idea that matter can take shape and determine its function. It is the world of lived things that evolves in the concept."*

## INTER-NOS



## DESIGN ROAD MAP

### STEP 1 . THE FIRST MEETING, THE INTERVIEW AND THE SURVEY

It is of great importance for both the designer and the customer. It is essential to collect as much organizational and technical and commercial information as possible. The interview also captures the empathic and creative side of the project, crucial elements for creating a communicative environment. With the first meeting, first impressions are born. Often these determine their future development. Where possible, it will be good to make an accurate survey of the premises.

### STEP 2 . THE PRELIMINARY PROJECT OR AVANT PROJECT

The avant project is carried out in order to determine the guidelines for the realization of the project itself. **WINGS** it is equipped with CAD and BIM applications at the top of the market.

### STEP 3 . PHOTOREALISTIC RENDERING

The photorealistic rendering is essentially used to create a preview of the realization, but also to receive the input that allows us to perceive the right way to follow on an emotional and sensorial level. **WINGS** è attrezzata con applicazioni di visualizzazione 3D al top del mercato.

### STEP 4 . THE ESTIMATE

On the plan of the project, each single group of elements that make up the furniture is identified by a reference number that will be reported in the description of the estimate. Project, estimate, planimetric tables and renders, will be used to identify the subject of the supply contract.

### STEP 5 . THE EXECUTIVE PHASE

After the definition of a supply contract, we will move on to the executive design phase carried out on dedicated tables. The supplies will also start together and the various workers will set themselves in motion for the realization of the project at the forecasted delivery time. This coordination is essential in order to guarantee the correct execution of the civil works connected to the project.



CONTATTO DIRETTO: +39-3200362698

Via Leone XIII, 4 - 25037 Pontoglio (BS) IT - EMAIL: [info@wingsworlds.com](mailto:info@wingsworlds.com) - WEBSITE: [www.inter-nos.info](http://www.inter-nos.info)